

**Contact:** Mr. John Byrnes  
Traffic Services Director  
Kalamazoo County Road Commission  
3801 East Kilgore Road  
Kalamazoo, MI USA 49001  
Phone: (269) 381-3171

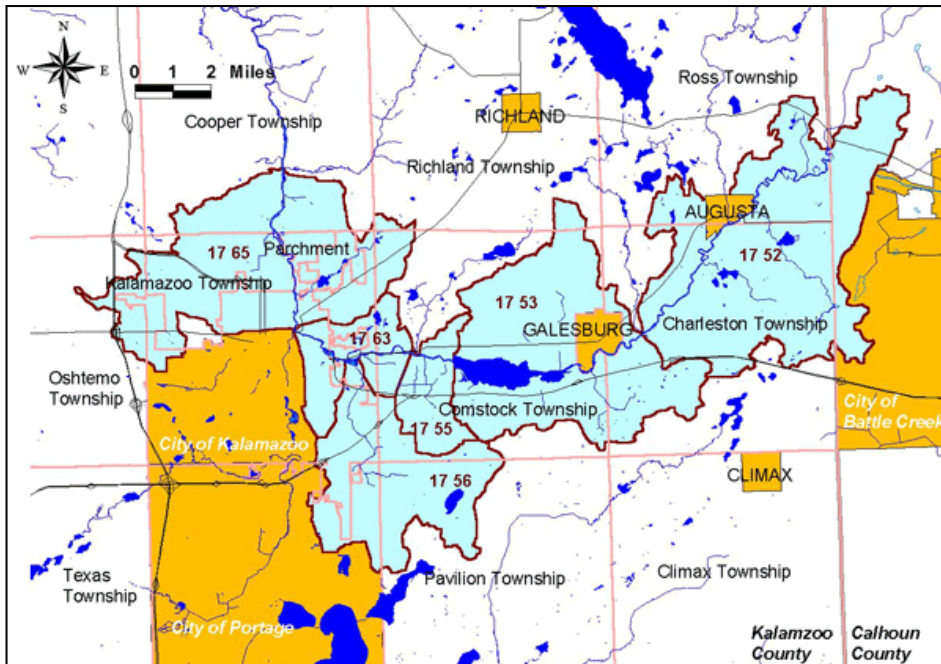
**Project Costs:** \$24,754

**Project Completion:** 2005

KIESER & ASSOCIATES, LLC (K&A), in cooperation with Environmental Consulting & Technology (ECT), was contracted by Kalamazoo County to develop a Watershed Management Plan (WMP) for a portion of the Kalamazoo River Watershed referred to as the Mainstem 3 Corridor (M3C) Watershed. The WMP was prepared on behalf of eleven Municipal Separate Storm Sewer System (MS4) permit holders. Start to finish, this WMP was developed and submitted in two months time.

Surrounding watersheds already fell under other existing watershed management plans or ongoing planning efforts. The M3C area crossed multiple jurisdictions and included watershed permittees (part of a Storm Water Working Group) that were already working together on required aspects of watershed based NPDES Permits. Additionally,

these same permittees fell within a portion of the larger Kalamazoo River watershed which is subject to a phosphorus TMDL and a Remedial Action Plan.



This planning process was driven by Steering Committee input. Key stakeholders were updated by Steering Committee members and are being asked to help direct the course of future planning efforts with the basis of communications maintained through an internet website

(<http://www.kalamazooringer.net/Corridor3>) dedicated solely to this project and future related efforts throughout the Kalamazoo River Watershed ([www.kalamazooringer.net](http://www.kalamazooringer.net)).

